

# ***UP-D895 Windows 2000 Printer Driver***

---

## Operating Guide

This guide describes installation and use of the Windows 2000 printer driver.

### **Before Using this Software**

Before using the printer driver, be sure to read the “ReadMe” file located on the CD-ROM.

# **UP-D895**

---

# Table of Contents

**Installing the Printer Driver ..... 3**  
**Using the Printer Driver ..... 5**

Microsoft and Windows are registered trademarks of Microsoft Corporation. Other company names and product names mentioned in this guide are also trademarks and registered trademarks.

# Installing the Printer Driver

- 1 Connect the UP-D895 to your computer.
- 2 Turn on the UP-D895.
- 3 Turn on the computer, and then log in as the system administrator.  
After Windows 2000 starts, the [Found New Hardware Wizard] dialog box opens.



If the [Found New Hardware Wizard] dialog box does not open, perform one of the following procedures.

## When the UP-D895 is connected through a USB cable

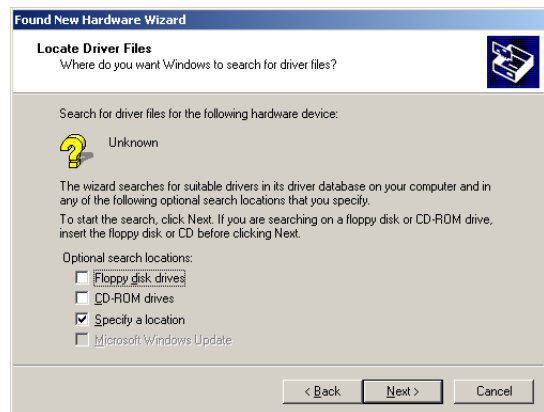
- 1 On the [Start] menu, point to [Settings], and then click [Control Panel]. [Control Panel] opens.
- 2 Double-click [System]. The [System Properties] dialog box opens.
- 3 Click the [Hardware] tab, and then click the [Device Manager] button. The [Device Manager] window opens.
- 4 Double-click [Universal Serial Bus controllers].
- 5 Select [USB Printing Support], and on the [Action] menu, click [Uninstall].
- 6 Restart your computer. When Windows 2000 restarts, the [Found New Hardware Wizard] dialog box opens.

## When the UP-D895 is connected through a printer cable

- 1 On the [Start] menu, point to [Settings], and then click [Printers]. The [Printers] window opens.
- 2 Double-click [Add Printer]. The [Add Printer Wizard] dialog box opens. Follow the instructions on the screen to complete the procedure.
- 4 Click the [Next] button. The following screen opens.

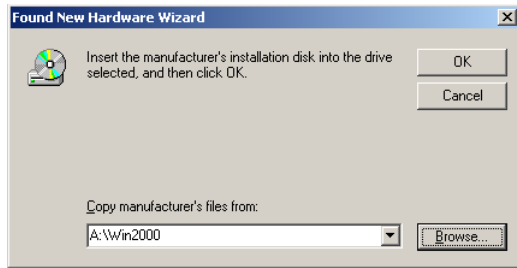


- 5 Select [Search for a suitable driver ...], and then click the [Next] button. The following screen opens.

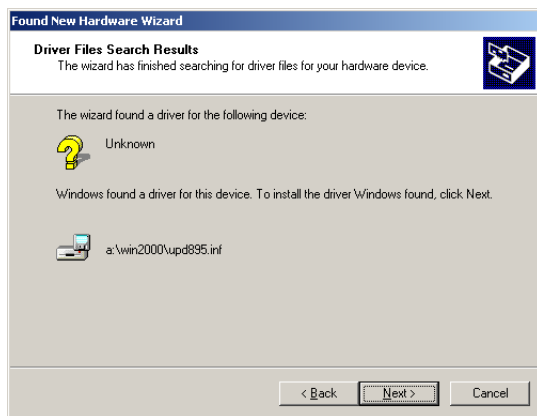


- 6 Insert the provided “PRINTER DRIVER UP-D895” CD-ROM into the CD-ROM drive.

- 7 Select the [Specify a location] check box, and then click the [Next] button.  
The following dialog box opens.



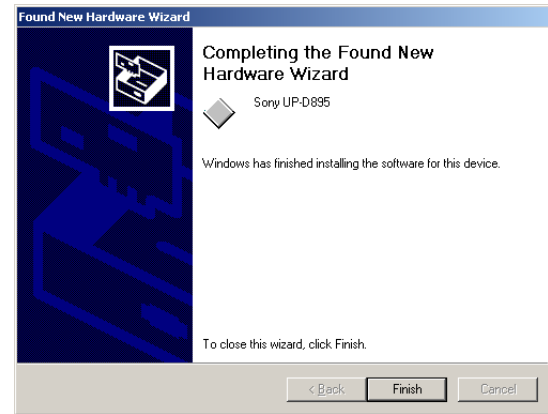
- 8 Click the [Browse] button, select the [Win2X] folder on the CD-ROM, and then click the [OK] button.  
The following screen opens.



- 9 Click the [Next] button.



- If the [Digital Signature Not Found] dialog box opens, click the [Yes] button.  
The following screen opens.

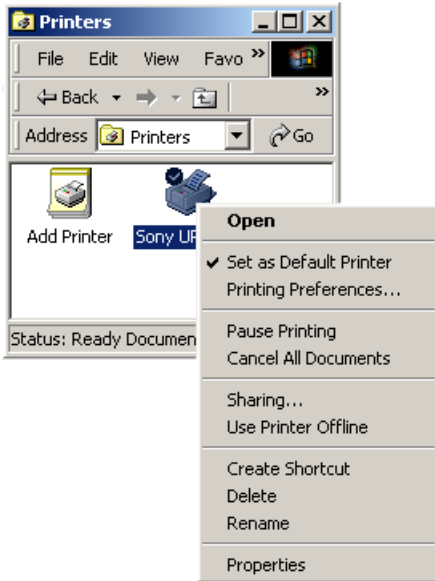


- 10 Click the [Finish] button.

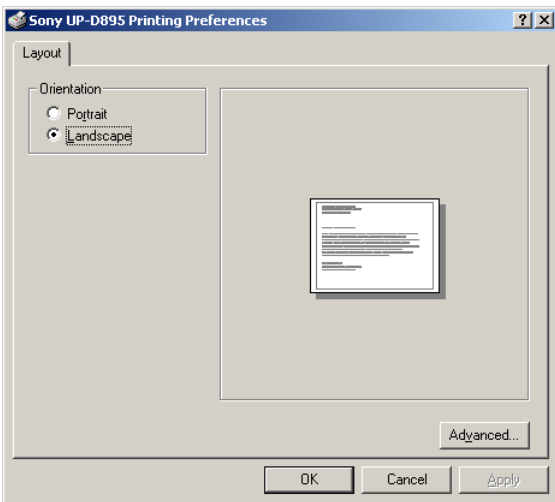
The completes the installation of the printer driver.

# Using the Printer Driver

You can use the printer driver's printing preferences to set the default paper size, orientation, and make other important settings. Double-click [Printers] in [Control Panel], right-click [Sony UP-D895], and then click [Printing Preferences].



The [Sony UP-D895 Printing Preferences] dialog box opens and contains the following tab and items.

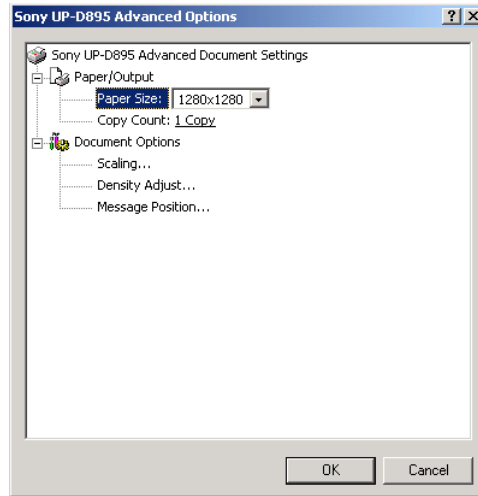


## Orientation

Select [Portrait] or [Landscape] for the print orientation.

## Advanced

Click [Advanced] to open the [Sony UP-D895 Advanced Options] dialog box which contains the following options. You can change these settings as required.



## Paper Size

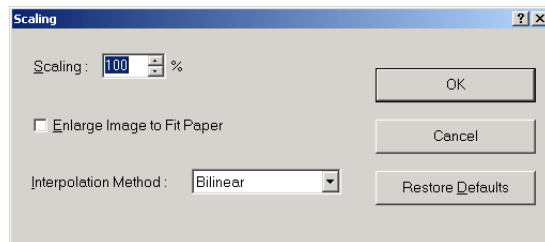
Select the paper size (960 × 1280, 1280 × 1280, 1920 × 1280, 3840 × 1280, 4096 × 1280).

## Copy Count

Select the number of copies to print (1 to 255).

## Scaling

Click [Scaling Properties] to open the [Scaling] dialog box which contains the following items.



## [Scaling]

Select the rate of enlargement or reduction (10% to 400%). To interpolate the image, select a [Interpolation Method] setting below. [Enlarge Image to Fit Paper] cannot be used with this feature.

## [Enlarge Image to Fit Paper]

If the image size is smaller than the size of the selected paper, the image is enlarged automatically to fit the paper. The [Interpolation Method] feature below can be selected, but the [Scaling] feature cannot be used.

### [Interpolation Method]

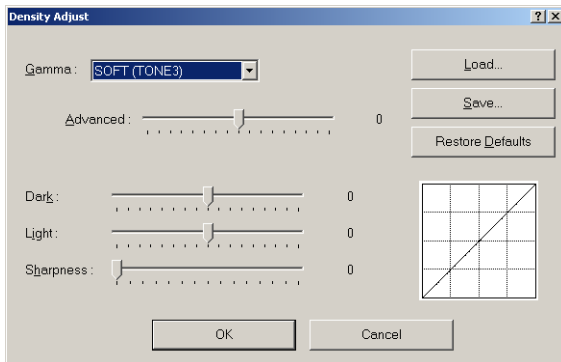
Select the image interpolation method ([Nearest Neighbor], [Bilinear], [Bicubic]). With [Scaling] selected, the [Bicubic] item cannot be selected.

### [Restore Defaults]

Restores the settings to their default values.

## Density Adjust

Click [Density Adjust Properties] to open the [Density Adjust] dialog box which contains the following items.



### [Gamma]

Select [HARD (TONE1)], [NORMAL (TONE2)], or [SOFT (TONE3)].

### [Advanced]

Drag the slider to select the level of gradation. The larger the selected value, the darker the gradation.

### [Dark]

Drag the slider to adjust the dark parts of the image.

### [Light]

Drag the slider to adjust the light parts of the image.

### [Sharpness]

Drag the slider to adjust the outline of the image. The larger the selected value, the sharper the edges of the image.

### [Load]

Allows you to load saved settings.

### [Save]

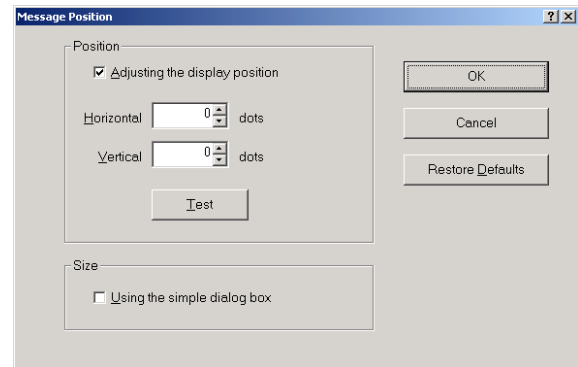
Allows you to save the current settings.

### [Restore Defaults]

Restores the settings to their default values.

## Message Position

Click [Message Position] and select [Message Position Properties] to open the [Message Position] dialog box which contains the following items.



### [Adjusting the display position]

Select this check box to adjust the display position of message dialog boxes. The message dialog box appears in the position defined by the values specified in the [Horizontal] and [Vertical] boxes.

### [Horizontal] and [Vertical]

Defines the position of message dialog boxes, using the upper-left corner of the screen as the origin.

### [Test]

Click this button to display a test message dialog box in the position defined by [Horizontal] and [Vertical], which allows you to verify the accuracy of its position.

### [Using the simple dialog box]

Select this check box to display smaller size message dialog boxes.

### [Restore Defaults]

Restores the settings to their default values.