

UP-D895 Windows XP Printer Driver

Operating Guide

This guide describes installation and use of the Windows XP printer driver.

Before Using this Software

Before using the printer driver, be sure to read the “ReadMe” file located on the CD-ROM.

UP-D895

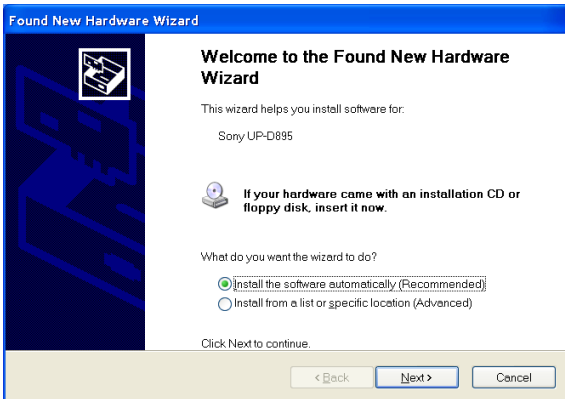
Table of Contents

Installing the Printer Driver	3
Using the Printer Driver	4

Microsoft and Windows are registered trademarks of Microsoft Corporation. Other company names and product names mentioned in this guide are also trademarks and registered trademarks.

Installing the Printer Driver

- 1 Connect the UP-D895 to your computer.
- 2 Turn on the UP-D895.
- 3 Turn on the computer and log on as the system administrator.
The [Found New Hardware Wizard] dialog box opens.



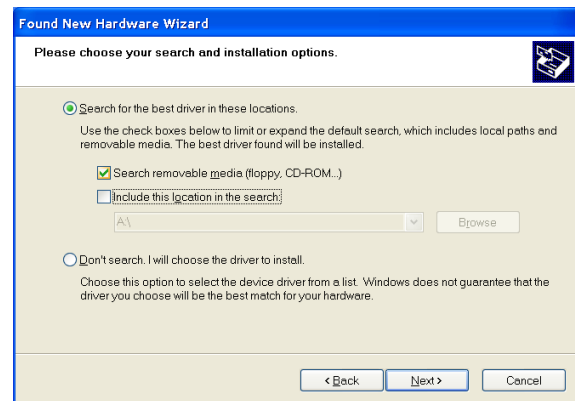
If the [Found New Hardware Wizard] dialog box does not open, perform one of the following procedures.

When the UP-D895 is connected through a USB cable

- 1 On the [Start] menu, click [Control Panel]. [Control Panel] opens.
- 2 Click [Performance and Maintenance], and then click [System]. (In Classic View, double-click [System] in [Control Panel].)
The [System Properties] dialog box opens.
- 3 Click the [Hardware] tab, and then click the [Device Manager] button.
The [Device Manager] window opens.
- 4 Double-click [Universal Serial Bus controllers].
- 5 Select [USB Printing Support], and on the [Action] menu, click [Uninstall].
- 6 Restart your computer.
When Windows XP restarts, the [Found New Hardware Wizard] dialog box opens.

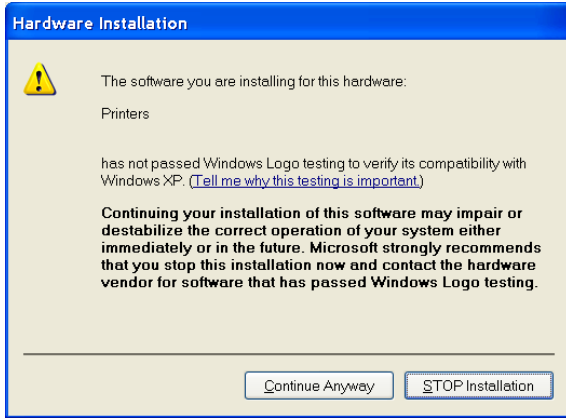
When the UP-D895 is connected through a printer cable

- 1 On the [Start] menu, click [Control Panel]. [Control Panel] opens.
- 2 Click [Printer and Other Hardware], and then click [Add a printer]. (In Classic View, double-click [Printers and Faxes] in [Control Panel], then click [Add a printer] in the [Printer Tasks] group on the left.)
The [Add Printer Wizard] dialog box opens. Follow the instructions on the screen to complete the procedure.
- 4 Select [Install from a list or specific location (Advanced)], and then click the [Next] button.
The following screen opens.



- 5 Select [Search for the best driver in these locations], and then select the appropriate check box, depending on the location of the driver.
If the driver is located on a floppy disk, CD-ROM, or other removable media, select the [Search removable media (floppy, CD-ROM...)] check box. If the driver is located on the hard disk of your computer, select the [Include this location in the search] check box, click the [Browse] button, and then specify the location of the driver.

- 6 Click the [Next] button.
The following screen opens.



- 7 Click the [Continue Anyway] button.
The following screen opens.



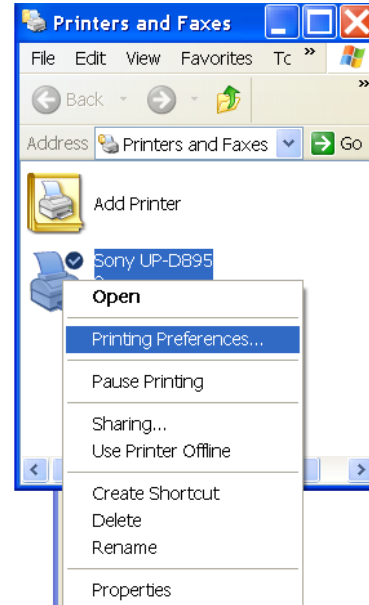
- 8 Click the [Finish] button.

- 9 Restart the computer.

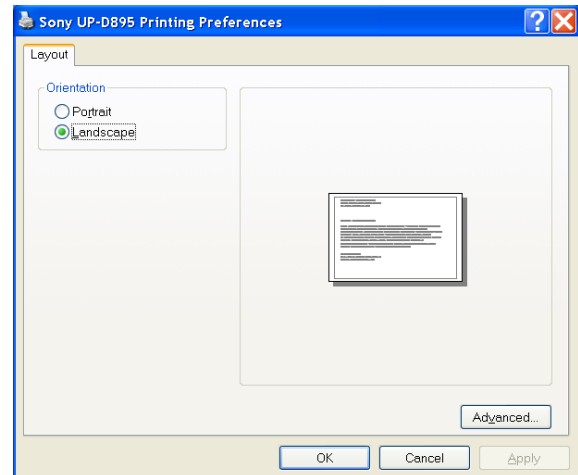
This completes the installation of the printer driver.

Using the Printer Driver

You can use the printer driver's printing preferences to set the default paper size, orientation, and make other important settings. Double-click [Printers and Faxes] in [Control Panel], right-click [Sony UP-D895], and then click [Printing Preferences].



The [Sony UP-D895 Printing Preferences] dialog box opens and contains the following tab and items.

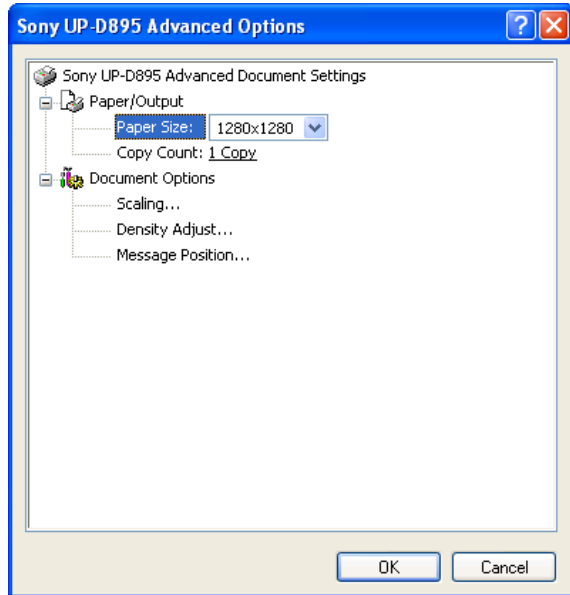


Orientation

Select [Portrait] or [Landscape] for the print orientation.

Advanced

Click [Advanced] to open the [Sony UP-D895 Advanced Options] dialog box which contains the following options. You can change these settings as required.



Paper Size

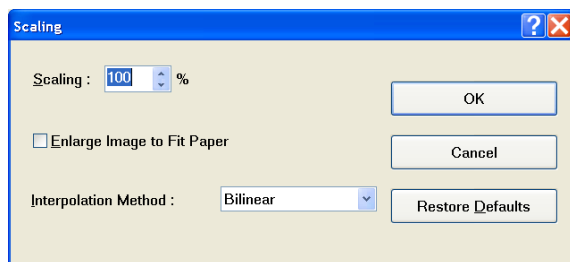
Select the paper size (960 × 1280, 1280 × 1280, 1920 × 1280, 3840 × 1280, 4096 × 1280).

Copy Count

Select the number of copies to print (1 to 255).

Scaling

Click [Scaling Properties] to open the [Scaling] dialog box which contains the following items.



[Scaling]

Select the rate of enlargement or reduction (10% to 400%). To interpolate the image, select a [Interpolation Method] setting below. [Enlarge Image to Fit Paper] cannot be used with this feature.

[Enlarge Image to Fit Paper]

If the image size is smaller than the size of the selected paper, the image is enlarged automatically to fit the paper. The [Interpolation Method] feature below can be selected, but the [Scaling] feature cannot be used.

[Interpolation Method]

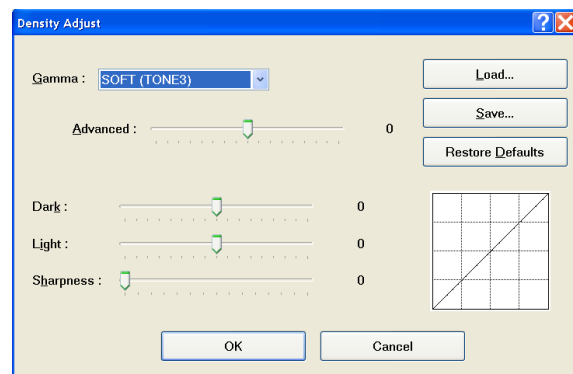
Select the image interpolation method ([Nearest Neighbor], [Bilinear], [Bicubic]). With [Scaling] selected, the [Bicubic] item cannot be selected.

[Restore Defaults]

Restores the settings to their default values.

Density Adjust

Click [Density Adjust Properties] to open the [Density Adjust] dialog box which contains the following items.



[Gamma]

Select [HARD (TONE1)], [NORMAL (TONE2)], or [SOFT (TONE3)].

[Advanced]

Drag the slider to select the level of gradation. The larger the selected value, the darker the gradation.

[Dark]

Drag the slider to adjust the dark parts of the image.

[Light]

Drag the slider to adjust the light parts of the image.

[Sharpness]

Drag the slider to adjust the outline of the image. The larger the selected value, the sharper the edges of the image.

[Load]

Allows you to load saved settings.

[Save]

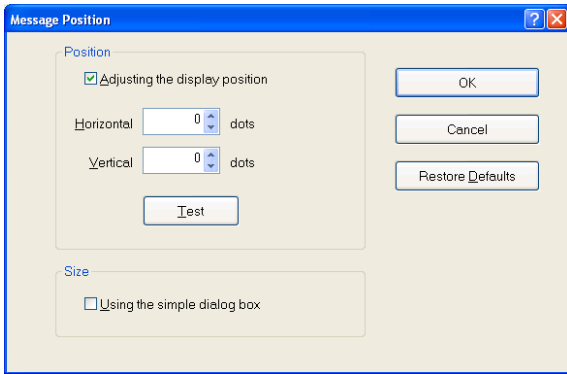
Allows you to save the current settings.

[Restore Defaults]

Restores the settings to their default values.

Message Position

Click [Message Position] and select [Message Position Properties] to open the [Message Position] dialog box which contains the following items.



[Adjusting the display position]

Select this check box to adjust the display position of message dialog boxes. The message dialog box appears in the position defined by the values specified in the [Horizontal] and [Vertical] boxes.

[Horizontal] and [Vertical]

Defines the position of message dialog boxes, using the upper-left corner of the screen as the origin.

[Test]

Click this button to display a test message dialog box in the position defined by [Horizontal] and [Vertical], which allows you to verify the accuracy of its position.

[Using the simple dialog box]

Select this check box to display smaller size message dialog boxes.

[Restore Defaults]

Restores the settings to their default values.